

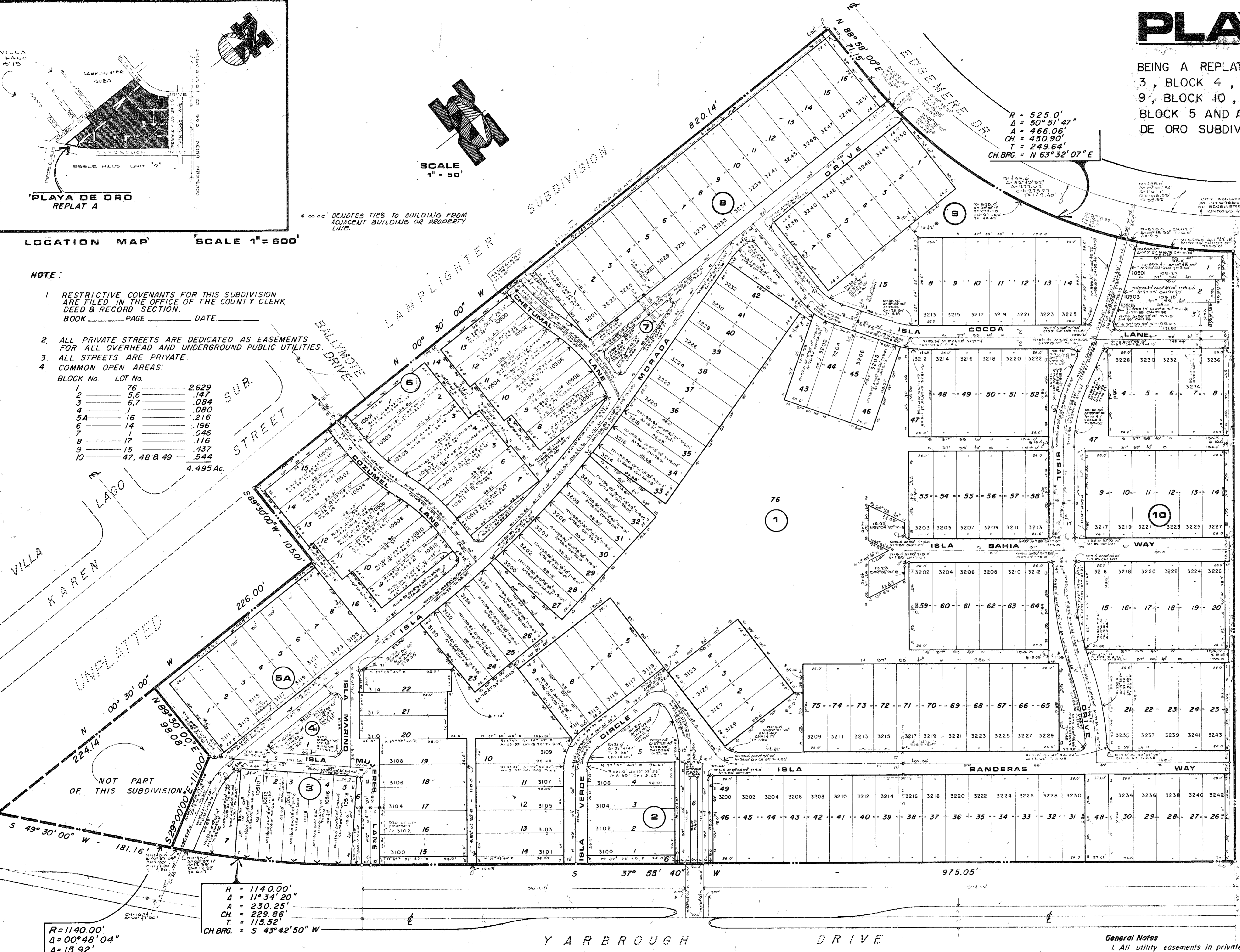
**REPLAT A**  
**PLAYA DE ORO**

BEING A REPLAT OF ALL OF BLOCK 1, BLOCK 2, BLOCK 3, BLOCK 4, BLOCK 6, BLOCK 7, BLOCK 8, BLOCK 9, BLOCK 10, BLOCK 11 AND A PORTION OF LOTS 4-5, BLOCK 5 AND A PORTION OF ISLA MUJERES LANE, PLAYA DE ORO SUBDIVISION, CITY OF EL PASO, EL PASO COUNTY, TEXAS  
CONTAINING 18.155 ACRES

DEDICATION

- LOCATION MAP** SCALE 1" = 600'
- NOTE:**
- 1. RESTRICTIVE COVENANTS FOR THIS SUBDIVISION ARE FILED IN THE OFFICE OF THE COUNTY CLERK DEED & RECORD SECTION. BOOK \_\_\_\_\_ PAGE \_\_\_\_\_ DATE \_\_\_\_\_
  - 2. ALL PRIVATE STREETS ARE DEDICATED AS EASEMENTS FOR ALL OVERHEAD AND UNDERGROUND PUBLIC UTILITIES.
  - 3. ALL STREETS ARE PRIVATE.
  - 4. COMMON OPEN AREAS:

BLOCK No.	LOT No.	Acres
1	76	2.629
2	5, 6	.147
3	6, 7	.084
4	1	.080
5A	16	.216
6	14	.196
7	1	.046
8	17	.116
9	15	.437
10	47, 48 & 49	.544
		4.495 Ac.



STATE OF TEXAS  
COUNTY OF EL PASO

Surety Service Corporation owner of this land, hereby presents this map and dedicates to the use of the public the utilities and drainage easements as herein laid down and designated, including easements for overhead service wires for pole utility uses, and for buried service wires, conduits and pipes for underground utilities and the right to ingress and egress for service and construction, and the right to trim interfering trees and shrubs. Surety Service Corporation in recording this plat has designated the common open in Lot 76, Block 1; Lots 5-6, Block 2; Lots 6-7, Block 3; Lot 1, Block 4; Lot 16, Block 5A; Lot 14, Block 6; Lot 1, Block 7; Lot 17, Block 8; Lot 15, Block 9; and Lots 47-49, Block 10; and the private streets and parking area in subdivision intended for use by the homeowners in PLAYA DE ORO for recreation and other related activities said designated areas are not dedicated hereby for use by the general public but are reserved for the common use and enjoyment of the homeowners in PLAYA DE ORO to the extent provided in the Declaration of Covenants, Conditions, and Restrictions applicable to PLAYA DE ORO dated \_\_\_\_\_ A.D. said Declaration of Covenants, Conditions, and Restrictions is hereby incorporated and made a part of this plat, together with and including similar declarations which may be filed hereafter, covering other parts of PLAYA DE ORO.

Witness our signature this \_\_\_\_\_ day of \_\_\_\_\_ 197\_\_ A.D.

SECRETARY SERVICE CORPORATION

Attest: Secretary \_\_\_\_\_

Vice President \_\_\_\_\_

**ACKNOWLEDGEMENT**

Before me, the undersigned authority, on this day personally appeared \_\_\_\_\_ known to me to be the person whose name is subscribed to the foregoing instrument, and acknowledged to me that he executed the same for the purposes and considerations therein stated.

Given under my hand and seal \_\_\_\_\_ day of \_\_\_\_\_ 197\_\_ A.D.

Notary Public in and for El Paso County, Texas

My commission expires \_\_\_\_\_

**CITY PLAN COMMISSION**

This subdivision is hereby approved as to the platting and as to the conditions of the dedication in accordance with 97.4 A of Vernon's Texas Statutes this \_\_\_\_\_ day of \_\_\_\_\_ 197\_\_ A.D.

Secretary \_\_\_\_\_

Chairman \_\_\_\_\_

Accepted and adopted by the City Council of El Paso this \_\_\_\_\_ day of \_\_\_\_\_ 197\_\_ A.D.

City Clerk \_\_\_\_\_

Mayor \_\_\_\_\_

Approved for filing this \_\_\_\_\_ day of \_\_\_\_\_ 197\_\_ A.D.

City Engineer \_\_\_\_\_

Filed and recorded in the office of the County Clerk of El Paso County, Texas this \_\_\_\_\_ day of \_\_\_\_\_ 197\_\_ A.D.,

In Volume \_\_\_\_\_ of the Plat Record Page \_\_\_\_\_ File no. \_\_\_\_\_

County Clerk \_\_\_\_\_

By Deputy \_\_\_\_\_

Prepared by and under the supervision of \_\_\_\_\_

Registered Professional Engineer No. \_\_\_\_\_

TORY G. CONDE

R = 1140.00'  
Δ = 00° 48' 04"  
A = 15.92'  
CH = 15.92'  
T = 7.96"  
CH.BRG. = S 49° 54' 51" W

R = 1140.00'  
Δ = 11° 34' 20"  
A = 230.25'  
CH = 229.86'  
T = 115.52"  
CH.BRG. = S 43° 42' 50" W

**General Notes**

- 1. All utility easements in private streets will be 32', 16" on each side of the centerline except as noted on the plat.
- 2. For street drainage and grading plans refer to original PLAYA DE ORO SUBDIVISION. These plans are on file at the offices of the City Engineer.